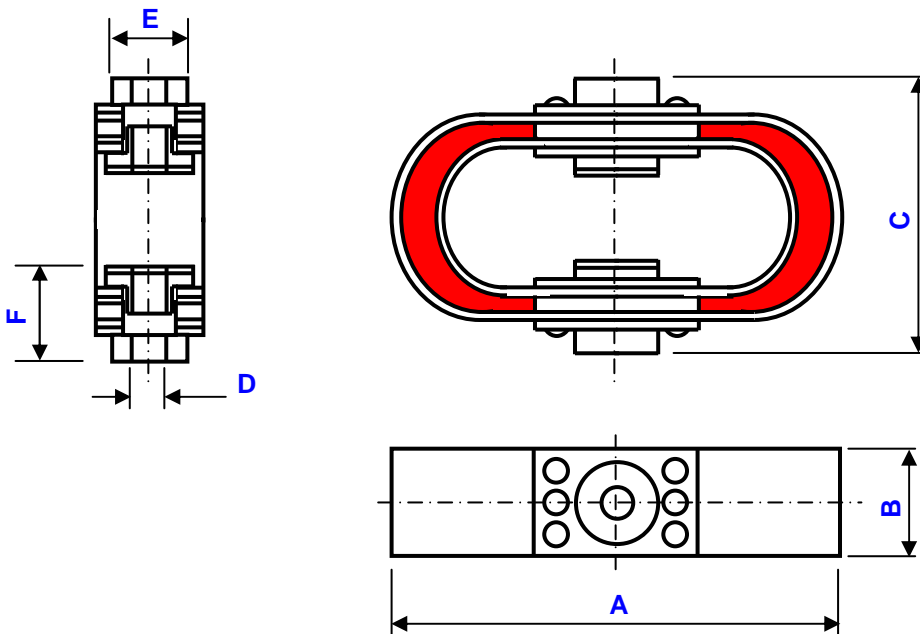


# rubber spring mounts navy shock line "LS"

series  
**LSX**

## definition



- Multidirectional anti-vibration/ shock mounts.
- Displacement under shock up to 60mm along vertical direction and 40mm along radial.
- Transmissibility :  $2 < Q < 6$ .
- Transmitted acceleration limited to 5g along longitudinal direction and to 15g along vertical and transversal.
- Temperature range : -20°C +40°C.



### Series

Materials and finishes

#### LSX

**Leaf and washer :**  
stainless steel.  
**Compound :**  
epoxy resin  
**Bush :**  
nylon

### Loads and Dimensions

Type	Static load (kg)			A	B	C	D	E	F	mass (kg)	NATO stock number
	min	nom	max								
<b>-10</b>	9	10	18	203	51	114	9 (M8)	32	23	0,68	5340-99-923-5717
<b>-20</b>	18	20	35	203	51	114	9 (M8)	32	23	0,80	5340-99-923-5718
<b>-45</b>	35	45	55	216	51	133	13 (M12)	32	26	1,02	5340-99-923-5719
<b>-70</b>	55	70	90	216	51	133	13 (M12)	32	26	1,13	5340-99-923-5720
<b>-110</b>	90	110	135	216	51	133	13 (M12)	32	26	1,25	5340-99-923-5721
<b>-180</b>	135	180	250	297	102	190	21 (M20)	64	43	5,90	5340-99-520-8429
<b>-320</b>	250	320	380	297	102	190	21 (M20)	64	43	6,57	5340-99-520-8428
<b>-450</b>	380	450	550	297	102	190	21 (M20)	64	43	7,25	5340-99-520-8427
<b>-450S</b>	380	450	550	365	50	210	21 (M20)	32	32	7,25	5340-99-520-6107

**Example :**  
LSX-45F

**L S X - 4 5 F**

**Prefix :**  
"Leaf Spring" mount  
from the series LSX

**Model : -45**  
nominal static load : 45 kg  
height : 133 mm  
length : 216 mm  
width : 51 mm  
mass : 1,02 kg

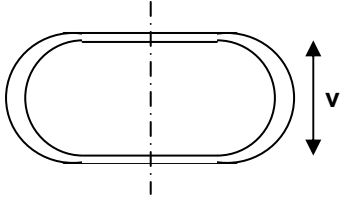
01/07/2013

Socitec  
BP 33, 78501 Sartrouville cedex - France  
Telephone : +33 (0)1 61 04 60 00  
Fax : +33 (0)1 39 14 03 27  
<http://www.socitec.com>  
e-mail : [shock-intl@socitec.com](mailto:shock-intl@socitec.com)

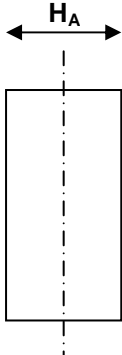
Document subject to modification without prior notice



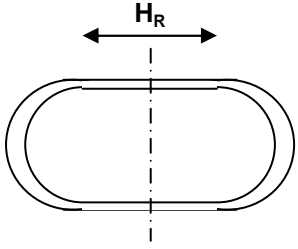
**series** leaf spring elastomer mounts  
**LSX** standard line "LS"  
*performances\**



Vertical		Series LSX	Model	-10	-20	-45	-70	-110	-180	-320	-450	-450S
Natural frequency	$f_c$ Hz			6,5	6,5	7,5	6,5	7,0	9,5	8,0	7,5	
	$f_v$ Hz	①		8,5	8,5	8,5	8,5	8,5	13,0	9,5	9,5	
Static deflection	$d_1$ mm			6,2	6,2	8,6	8,2	7,7	4,3	5,4	4,3	7,7
	$d_2$ mm	③		8,6	8,6	11,6	11,2	10,5	5,9	7,4	5,9	10,3
Static stiffness	$k_s$ N.mm <sup>-1</sup>			13	26	44	70	120	350	500	875	
Support ②												
Stiffness	$K$ N.mm <sup>-1</sup>			200	450	900	1300	2000	3500	6000	8500	8500
Strength	$F$ N			150	300	675	1050	1650	2700	4800	6750	6750



Horizontal across		Series LSX	Model	-10	-20	-45	-70	-110	-180	-320	-450	-450S
Natural frequency	$f_c$ Hz			4,5	4,5	5,0	4,75	5,0	4,75	5,25	4,75	
	$f_v$ Hz	①		6,25	6,25	6,25	6,25	6,25	6,5	6,0	6,0	
Static stiffness	$k_s$ N.mm <sup>-1</sup>			17	35	58	91	149	665	788	1400	
Support ②												
Stiffness	$K$ N.mm <sup>-1</sup>			200	450	900	1300	2000	3500	6000	8500	8500
Strength	$F$ N			150	300	675	1050	1650	2700	4800	6750	6750



Horizontal roll		Series LSX	Model	-10	-20	-45	-70	-110	-180	-320	-450	-450S
Natural frequency	$f_c$ Hz			3,5	3,5	4,25	4,0	4,25	4,0	4,25	4,0	
	$f_v$ Hz	①		5,0	5,0	5,0	5,0	5,0	5,5	5,0	5,0	
Static stiffness	$k_s$ N.mm <sup>-1</sup>			7	14	24	39	61	175	219	385	
Support ②												
Stiffness	$K$ N.mm <sup>-1</sup>			200	450	900	1300	2000	3500	6000	8500	8500
Strength	$F$ N			150	300	675	1050	1650	2700	4800	6750	6750

- ① Natural frequency ( $f_v$ ) and shock natural frequency ( $f_c$ ).
- ② Mini stiffness ( $K$ ) and strength ( $F$ ) of the support structure to which a mount is attached.
- ③ Static deflection mini ( $d_1$ ) and maxi ( $d_2$ ) at nominal loading.

\* **Important** : Performance characteristics are given here for reference only.  
 They can be increased under specific conditions.  
 Contact us.

01/07/2013

**Specifications**

**Applications :**

Fuel tanks, engines, seats, marine craft installations, ammunitions, generator sets, compressors, pumps, fans, air conditioning units, electric motors, electronic control equipment, laboratory equipment, ...

Socitec  
 BP 33, 78501 Sartrouville cedex - France  
 Telephone : +33 (0)1 61 04 60 00  
 Fax : +33 (0)1 39 14 03 27  
<http://www.socitec.com>  
 e-mail : [shock-intl@socitec.com](mailto:shock-intl@socitec.com)



Document subject to modification without prior notice